



# Evaporator Dryer Technologies, Inc.

1805 Ridgeway Street, Hammond, WI 54015

Tel.: 715.796.2313 Fax: 715.796.2378

Email: [Info@evapdryertech.com](mailto:Info@evapdryertech.com) Website: [www.evapdryertech.com](http://www.evapdryertech.com)

## PNEUMATIC HAMMER INSTRUCTIONS

88° OR LESS

VERTICAL EQUIPMENT MOUNTING

EDT PARTS LIST			
ITEM	QTY	PART NUMBER	DESCRIPTION
1	1	236-691-501	Pneumatic Hammer Housing
2	1	236-691-503	Thumper Ball
3	1	236-691-502	Impact Puck
4	1	236-691-504	Coil Spring
5	1	236-691-505	2 INCH TUBE HANGER
6	1	236-691-507	Solenoid Valve

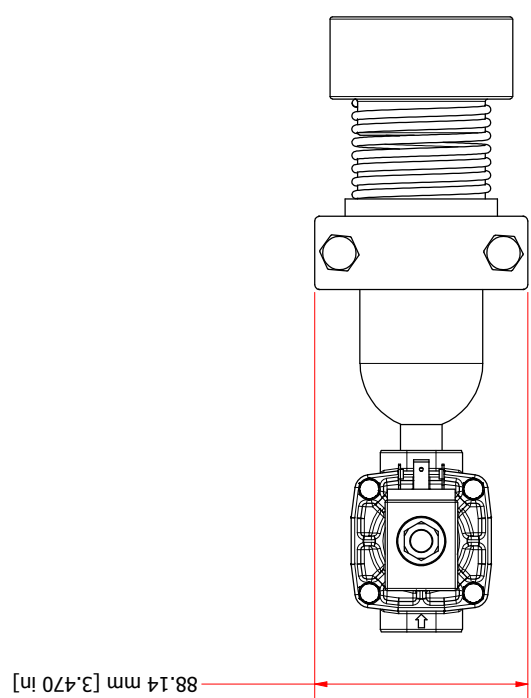
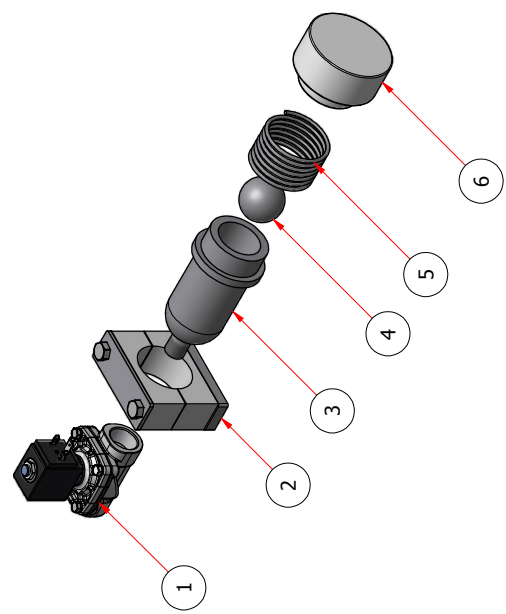
NOTE: P/N 236-691-507 IS A 24VDC SOLENOID.  
FOR 110VDC SOLENOID USE P/N: 236-691-506

ANGLED EQUIPMENT MOUNT

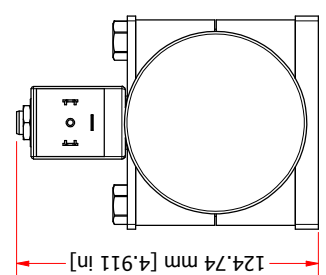
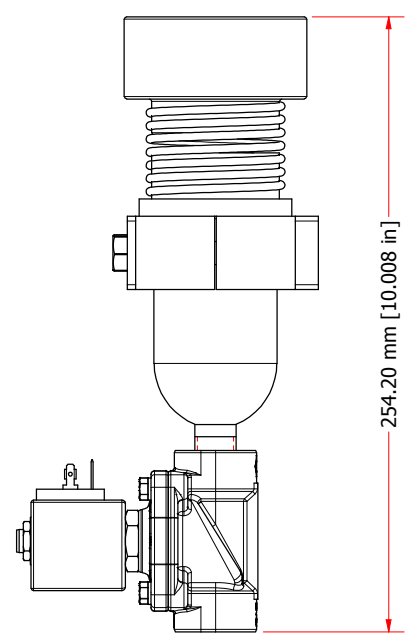
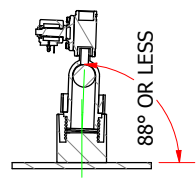
Recommended Spare Parts  
EDT Drawing Number: 236-691-500

1 2 3 4

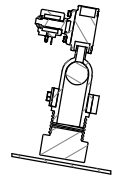
EDT PARTS LIST		
ITEM	QTY	DESCRIPTION
1	1	Solenoid Valve, 24 VDC
2	1	Hanger
3	1	Pneumatic Hammer Housing
4	1	Thumper Ball
5	1	Coil Spring
6	1	Impact Puck



**VERTICAL EQUIPMENT MOUNTING**



**ANGLED EQUIPMENT MOUNT**



<b>Evaporator Dryer Technologies, Inc.</b> 1805 Ridgeway Street Hammond, WI 54015 Telephone: 715.796.2313 Telefax: 715.796.2378 www.evapdryertech.com		TYPED DIMENSIONS UNLESS OTHERWISE SPECIFIED DIMENSIONS ARE IN MILLIMETERS X.X = ±.1 XXX = ±.01 ANGULAR TOL. = ±.5 DO NOT SCALE DRAWING	
TITLE: PNEUMATIC HAMMER, 24 VDC, IMPACT PUCK DESCRIPTION:		DRAWN BY: NRG DATE: 1/24/2013	SHEET SIZE: B
APPROVED BY: NRG DATE: 6/2/2014		DRAWING NUMBER: 236-691-515	SHEET 1 OF 1

1

B

4

A

1

**Overview:** EDT Pneumatic Hammer is designed to provide short duration strikes to thin walled equipment to release stubborn product deposits. Hammers can be mounted on such equipment as drying chambers, ductwork, cyclones, product hoppers and bagging systems.

These hammers provided enough vibration to remove deposits while maintaining the integrity of equipment. Short duration pulses limit fatigue on metal skins verses continuous vibrators. EDT hammers can be mounted to a support separate to equipment, eliminating damage and constant repairs of equipment shell.

EDT pneumatic hammers are simple yet effective, and designed to give you long term operation with limited maintenance. Compressed air propels the stainless steel ball into the Teflon impact puck transferring energy and vibration to the required surface. Air pulse rate is controlled by an integrated solenoid valve and impact force is controlled by modulating the air pressure supplied to the hammer. All materials used are FDA and USDA compliant.

**Installation considerations:** The EDT Pneumatic hammer is designed to mount on vertical or downward angled equipment. When mounting the pneumatic hammer on vertical equipment, the housing must be mounted at a minimum downward angle of 2° with the puck pressed up flat against the wall to allow for the ball to roll back after impacting the puck. Do not mount housing at a downward angle greater than 5° relative to the puck. Doing so may cause the ball to fly out of the housing during impact which could cause injury or damage to the unit. When mounting to angled equipment the housing should be mounted perpendicular to the wall of the equipment so that the puck and the housing are aligned on their center axis. Always be sure that the unit is mounted so that the surface of the impact puck lays flat against the wall of the equipment with minimal room for movement between the puck and the housing. The puck should never be allowed to move more than 6 mm or ¼” away from the equipment when it is pushed back tight to the housing. If the gap is larger than recommended, a shim (not included) may be placed between the hanger and the collar on the housing.

The solenoid valve is designed to accept a 3/8” MNPT fitting to hook up the air supply. This unit is designed to run at a maximum of 30 PSIG. Use an air regulator to set the air pressure.

**CAUTION: DO NOT EXCEED 30 PSIG. DOING SO MAY CAUSE INJURY OR DAMAGE TO UNIT**