

ULTRASONIC MILK ANALYSER
DIRECT MEASUREMENT OF COLD MILK SAMPLES,
starting at 5°C
No need of periodical calibration

Lactoscan Standart Automat

50 sec, 30 sec measurement

USB flash drive (option):
unlimited storage of measurement
results in Excel file, ready to be
processed in different reports



In-flow pH meter (option)

Inbuild printer

Inbuild keypad

Multilingual display

Buttons



結果
脂 03.32 固 07.69
密 27.38 蛋 02.81
糖 04.21 水 07.30

Results
F=03.02 S=07.93
D=28.55 P=02.90
L=04.35 W=04.23

В о д а = 49.80 2
Л а к т = 02.26
С о л и = 00.41
Т ч к з = -0.261

Resultados
G=04.18 S=07.70
D=25.52 P=02.81
L=04.11 A=08.26

SPECIFICATIONS Lactoscan SA:

Parameter	Measuring range	Accuracy
Fat	from 0.01% to 45%	± 0.06%
SNF	from 3% to 40%	± 0.15 %
Density	from 1000 to 1160 kg/m ³	± 0.3 kg/m ³
Protein	from 2% to 15%	± 0.15%
Lactose	from 0.01 % to 20%	± 0.20%
Added Water content	from 0 % to 70 %	± 3.0%
Temperature of milk	from 5°C to 40°C	± 1°C
Freezing point	from - 0,400 to - 0,700°C	± 0.005 °C
Salts	from 0,4 to 4%	± 0.05%
pH (option)	from 0 to 14	± 0.05%
conductivity (option)	from 2 to 14 mS/cm	± 0.05 (mS/cm)

Milk analyzer Lactoscan makes quick analysis of milk and liquid dairy products:

Cow milk (25%)	Whey	Concentrated milk (up to 1160kg/m ³)
Sheep milk	Cream (up to 45%)	Recovered milk
Buffalo milk	Skimmed milk (0,01% FAT)	Etc.

And can be calibrated by the customer with specific samples of:
Yoghurt, Flavoured milk, Ice-cream mixtures etc.

The measurement accuracy
not dependant on milk's acidity
High-end ultrasonic technology
for analyzing any kind of milk

Easily readable results
Possibility of connecting
pH probe
Integrated pH and
conductivity measuring
Self calibration
without computer

KEY FEATURES:

- User-friendly:
simple in operation,
maintenance, calibration
and installation
- Portable and
compact design
- Very small quantity
of milk required
- Low power consumption
- No use of hazardous
chemicals
- One year full warranty
- Adjustments of the
measurement accuracy
can be done by the
RS 232 interface
- ESC POS Printer Support
- Two samples
self-calibration

MEASURING PARAMETERS:

Fat
Solids-non-fat (SNF)
Density
Protein
Lactose
Milk sample temperature
Added water
Salts
Freezing point
Total Solids (option)
pH (option)
Conductivity (option)
Ion meter (option)



Lactoscan Standart Automat

ENVIRONMENTAL CONDITIONS:

Ambient air temperature
10°C - 40°C (option 43 °C)

Milk temperature 1°C - 40°C

Relative humidity 30% - 80%

50 sec, 30 sec measurement

pH measuring system (degree of acidity) (option)
In-flow pH measuring system (degree of acidity)
All parameters are measured by sucking
one 25 ml milk sample.



Integrated pH meter

ELECTRICAL PARAMETERS:

Switching Adapter

Input:
100 - 240 V ~ 1.6 A max.
50-60 Hz

Output: +12 V 4.17A min.

Output power: 50 - 65 W



12V output

12V input

Power switch

In Detergent

pH probe input

Serial interface
(RS232 / printer)

USB input

Waste pipe

MECHANICAL PARAMETERS:

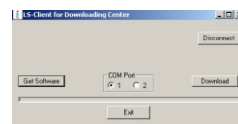
Dimensions
(W x L x H)
100x223x216 mm

Weight <4 kg

Stainless steel
cover box

MILK DATA Program:
milk collection accounting and management software.

Date	Time	SupN:	Ultr:	SnrL	Cal	Temo	Fat	SNF	Dens	Pro	Lac	Val	Sd	Freez	pH	Cond
150236	141639	0000	0000	0266	2	12.30	01.23	02.55	05.12	05.58	03.12	10.24	05.46	-0.513	05.19	02.59
150236	141640	0000	0000	0266	2	12.30	01.23	02.55	05.12	05.58	03.12	10.24	05.46	-0.513	05.19	02.59
150236	141641	0000	0000	0266	2	12.30	01.23	02.55	05.12	05.58	03.12	10.24	05.46	-0.513	05.19	02.59
150236	141642	0000	0000	0266	2	12.30	01.23	02.55	05.12	05.58	03.12	10.24	05.46	-0.513	05.19	02.59
150236	141643	0000	0000	0266	2	12.30	01.23	02.55	05.12	05.58	03.12	10.24	05.46	-0.513	05.19	02.59
150236	141644	0000	0000	0266	2	12.30	01.23	02.55	05.12	05.58	03.12	10.24	05.46	-0.513	05.19	02.59
150236	141645	0000	0000	0266	2	12.30	01.23	02.55	05.12	05.58	03.12	10.24	05.46	-0.513	05.19	02.59



Internet Remote Firmware
Update (Download center)

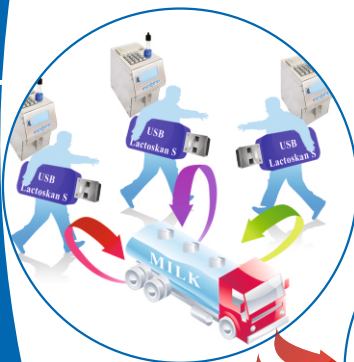
Embedded function real date
and time - registers the exact
time for delivery of milk in
the milk collecting center

Time: 08:15:31
Date: 06:04:2007
LACTOSCAN SLP
Serial Number: 8615
Calibr 1 Cov
Results:
Fat.....01.37%
SNF.....06.13%
Density.....22.23
Lactose.....03.27%
Solids.....08.48%
Protein.....02.35%
Added Water...30.76%
Temp. Sample...19.0°C
Freez. Point...-0.360°C
pH.....06.05
Conductivity...11.93!

Conductivity - built-in
conductivity sensor gives high
performance freezing point
analysis - avoid poor quality
milk due to added water;
detects mastitis and
falsifications with added salt

Visualisation
out of range measurement

USB flash-drive option -
the idea



Milk conductivity measuring system (option)

Milk conductivity changes depending
on concentration of ions in the milk.

Milk conductivity can be used for:

- test of udder health (detection of subclinical mastitis);
- control of water evaporation grade in condense milk production;
- determination of dry milk solubility rate.

ECS POS Serial Printer (option)

Prints the result of the current
measurement.



MILKOTRONIC LTD

Bulgaria, 6000 Stara Zagora
167, Tsar Simeon Veliki, A, 25
Tel: + 359 457 670 82,
Fax: + 359 457 670 83

e-mail: salesdpt@lactoscan.com
Eng, Spa, Port: +359 886 841 389
e-mail: sales2@lactoscan.com
Eng, Rus: +359 886 841 395
e-mail: mainservice@lactoscan.com
Eng, Rus: +359 888 811 017

e-mail: m.mihneva@lactoscan.com
Eng: + 359 885 597 232
e-mail: milkanalyzers@lactoscan.com
Eng, Rus: +359 896 753 803

distributors: